



EcoProof Roofing System Asbestos Specification



Asbestos Specification

EcoProof Roofing System Asbestos Specification

Preparation:

Prior to application of the system the substrate must be suitably prepared:

Option 1. A specialist surface preparation company can be employed to remove heavy build-up of moss and other friable materials utilising HSE approved systems. (For more information on asbestos cleaning contact our technical desk)

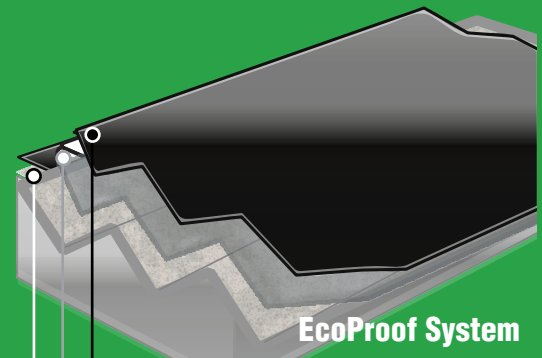
Option 2. When the roof is reasonably clean (little moss build-up or other growth) it is possible to treat the roof using bio-cide and Flood Coat to give a well balanced/stable surface. (For more information on asbestos cleaning contact our technical desk)

Flood Coat if required, Flood Coat can be applied by brush, roller or airless spray at an application rate of approx. 4-5 sq/m per litre. and should be applied to all surfaces requiring waterproofing.

Upstands to existing services, flashings, parapets etc. should be covered with Liquid Membrane and Strengthening Tape.

Existing fixings brush apply Mastic Adhesive around the heads and washers of all exposed fixings

Existing repairs loose or unstable repairs to be removed and new repairs carried out using Strengthening Tape bedded into Liquid Membrane.



Substrate

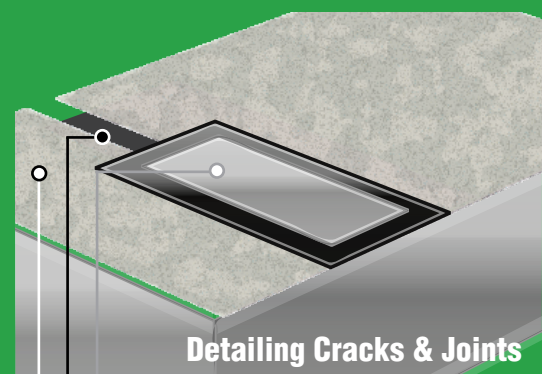
Cleaned surface ready to accept flood coat if required.

Flood Coat

Flood coat is used to seal in the porous surface if required.

EcoProof System

The main waterproofing membrane applied in 2 x 1mm coatings.



Substrate

Cleaned surface pre coated in flood coat.

Liquid Membrane

Generous coating of Liquid Membrane applied to surface. Mastic Adhesive is used to fill any gaps

Strengthening Tape

Strengthening Tape embedded into Liquid Membrane and brushed flat.

EcoProof Roofing System Asbestos Specification

Preparation:

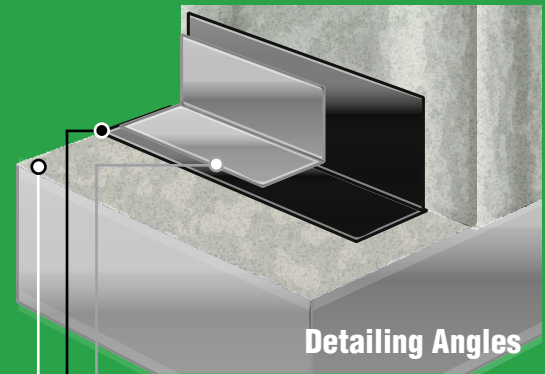
Applying Liquid Membrane and Strengthening Tape to upstands, cracks etc

Apply a liberal first coat of Liquid Membrane to the areas concerned. Pre-cut the Strengthening Tape to size and bed into the Liquid Membrane, shiny side up. Using a clean brush smooth the Strengthening Tape out forcing Liquid Membrane through the Tape. Apply extra as required to fully coat the Strengthening Tape, spread any surplus Liquid Membrane onto the next upstands to be coated. Try to avoid creating creases or blisters in the Strengthening Tape.

Where the membrane is required to be dressed into a mortar course it should be raked out and re-pointed with Mastic Adhesive. When applying the Liquid Membrane onto brickwork without dressing into the mortar course the membrane should be finished in the middle of the brick course.

When applying to services, vents etc. the Strengthening Tape should be pre-cut to closely follow the profile of the upstand. The tape should be fully bedded into the Liquid Membrane, care should be taken to avoid any bridging or creases in the membrane.

Cracks in existing roof sheets Liquid Membrane should be applied by brush along the full length of the crack. Strengthening Tape should then be bedded into the Liquid Membrane while the solution is still wet. A second coat of Liquid Membrane must be applied after the first coat has dried.



- **Substrate/Wall**

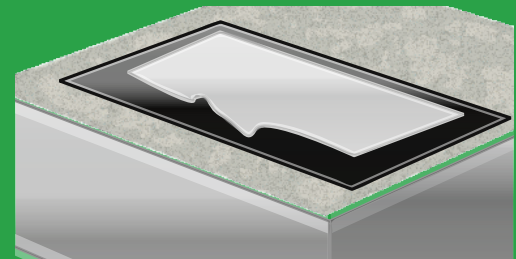
Cleaned surface pre coated in flood coat.

- **Liquid Membrane**

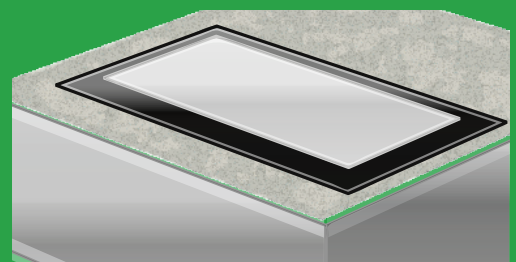
Generous coating of Liquid Membrane applied to surface.

- **Strengthening Tape**

Strengthening Tape embedded into Liquid Membrane and brushed flat.



Please ensure that when applying Strengthening Tape that it is completely flat and free of gaps or fish mouths.



The perfect finish for Strengthening Tape leaves it flat to the surface and free of gaps fully embedded into the Liquid Membrane below.

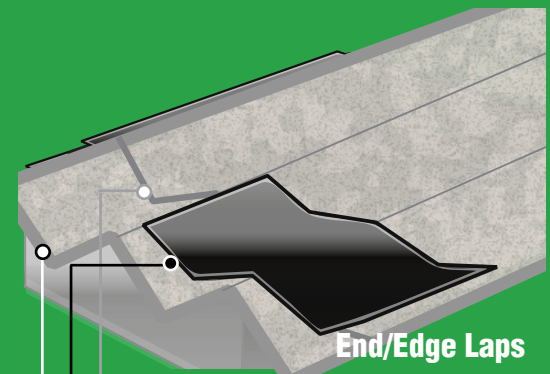


EcoProof Roofing System Asbestos Specification

Preparation:

End Laps. Only If deemed necessary a single coat of Liquid Membrane can be brush applied across the end laps to roof sheets, large gaps should be filled with Mastic Adhesive. Similarly any damaged corners or exposed mitres should be filled with Mastic Adhesive.

Side Laps Liquid Membrane and Strengthening Tape should be applied as previously described to any suspect side laps in the fibrous cement sheets and roof lights.



Substrate

Cleaned Asbestos sheet.

Edge Lap

Cleaned edge lap free of dirt and debris.

Liquid Membrane

Generous coating of Liquid Membrane overlapping joints by 100mm. Use Strengthening Tape if required.



EcoProof Roofing System Asbestos Specification

Detailing Please leave between 1-2 hours for detailing to be fully cured before application of main membrane.

Coverage Rate When using Liquid Membrane an application rate of 1ltr per sq/m per coat is to be maintained. This can be achieved by measuring the area to be covered and by weighing or decanting the necessary volume, 1Kg = 1Ltr.

Approved Contractor Training Ecoproof International Ltd host regular training programmes to provide contractors with the necessary skills and product knowledge to become a fully certified EcoProof Approved Contractor. For more information please call our technical help desk or email one of our team.

Application:

EcoProof Liquid Membrane is a two coat system applied by brush, roller or airless spray. The contractor is to determine the most suitable method of application.

Liquid Membrane should be applied at an average rate of 1.0Lt per sq/m per coat. Allow the first coat to dry before applying the second coat. Use area to volume calculations to ensure the correct coverage. Plan your application method working towards your exit point.

EcoProof Instant Set Spray Grade is a specialist single coat application normally used on larger contracts and can be applied at a rate of approx. 800 sq/m per day. Instant Set Spray Grade has to be applied by an approved/trained spray team using bespoke spray equipment. Please consult our specific manual for coverage, methodology, advice and training.

Arrangements can be made to hire a spray machine to apply the main membrane with all preparation work being carried out by the contractor. Contact our technical help desk for further information.



EcoProof Roofing System Asbestos Specification

Limitations EcoProof Roofing System should not be applied when the ambient temperature is below 5°C. The uncured membrane may be damaged if frozen. Do not apply to wet or frozen surfaces or directly prior to rain.

Caution Avoid storage below 5°C, keep out of direct sunlight. Please consult data sheets before using EcoProof Roofing System.

Contact Us:

EcoProof International Ltd
96 Harbours Walk
Gibraltar
GX11 1AA

(350) 58478000
andrew@ecoproofinternational.com
www.ecoproofinternational.com

Additional Information:

Top Coat (Optional). EcoProof is UV resistant and is not significantly affected by solar gain. 'Grey Top Coat' can be applied to the membrane to provide a solar reflective finish. 'EcoProof Top Coat' should be applied at a coverage rate of 5 SQ/M per Litre.

Handling Keep containers upright and tightly closed when not in use and keep from freezing.

Maintenance In accordance with good roofing practice it is the clients responsibility to ensure that the roof is regularly inspected and maintained to ensure the membrane is at its optimum performance. This includes removal of foreign materials and dirt and the repair of any damage by tradesmen, falling debris etc. For further information please consult our separate data sheet for maintenance and repair of EcoProof Membranes.